

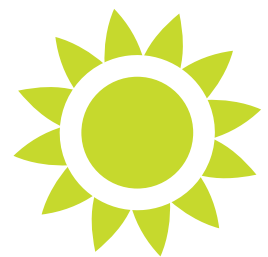


ROCKY MOUNTAIN SCHOOL DISTRICT NO. 6 BOARD OF EDUCATION

FOUR YEAR STRATEGIC PLAN 2023-2027

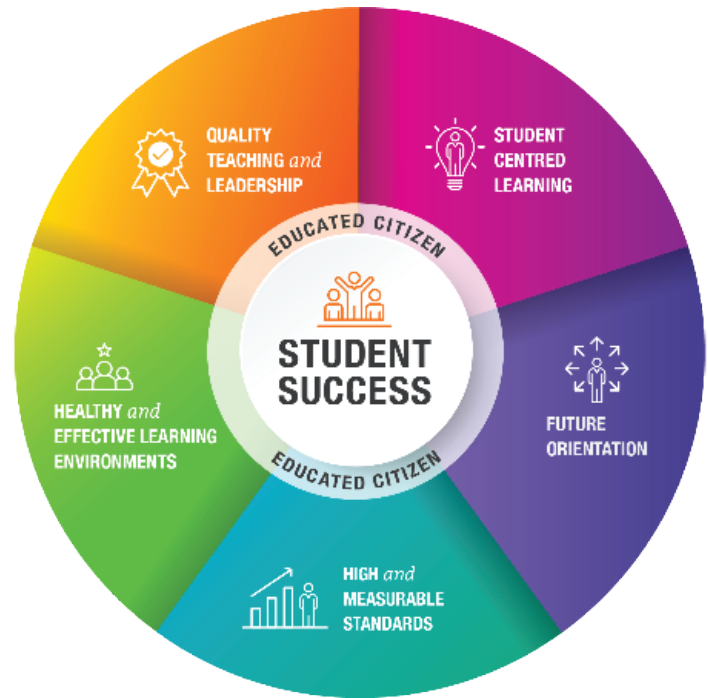
Every four years following the election, the Board of Education enters into a strategic planning cycle in alignment with the Ministry of Education and Child Care, Framework for Enhancing Student Learning (FESL) legislation.

The Framework brings a formalized approach to the planning and reporting expectations for schools with a focus on enhancing student learning and success. It combines accountability with evidence-informed decision making and system wide continuous improvement. FESL reflects a public commitment by Indigenous peoples, Indigenous rights holders, education partners and communities to work together to improve student learning and enhance the physical, mental, emotional and spiritual development of all learners.



The Educated Citizen is designed as having:

- **Intellectual Development** – to develop the ability of students to analyze critically, reason and think independently, and acquire basic learning skills and bodies of knowledge; to develop in students a lifelong appreciation of learning, a curiosity about the world around them, and a capacity for creative thought and expression.
- **Human and Social Development** – to develop in students a sense of self-worth and personal initiative; to develop an appreciation of the fine arts and an understanding of cultural heritage; to develop an understanding of the importance of physical health and well-being; to develop a sense of social responsibility, acceptance and respect for the ideas and beliefs of others.
- **Career Development** – to prepare students to attain their career and occupational objectives; to assist in the development of effective work habits and the flexibility to deal with change in the workplace.



The Four-Year Strategic Plan outlines the mission, vision, values and priorities for the School District as set out by the Board of Education. Each year, District Leadership will operationalize the plan to include goals and strategies to continually improve the learning agenda. The strategic planning cycle (Figure 1) is a purposeful approach to review data, engage stakeholders and set annual targets for improvement.



VISION

Limitless Potential



MISSION

To support, nurture and empower each student.

VALUES

Relationships

Connections with the land, self, and others develops compassion, safety, and well-being.

Equity

Support and opportunity to reach potential.

Integrity

Honesty and responsibility in respect and care for others.

Innovation

Courageously pursue continuous growth.

Curiosity

Seek to understand.





PRIORITY 1 **Equity, Diversity, and Inclusion**


Priority 1 reflects the SD6 Rocky Mountain commitment to safe learning environments that respect diversity in all communities. Students who see themselves reflected in classrooms and schools across the School District are more likely to engage in learning and participate meaningfully in designing their future. All students are unique. Priority 1 ensures, regardless of the gifts and talents each student brings to school each day, they can expect their needs will be supported in ways that allow them to grow and develop their strengths. Pursuing equity, diversity, and inclusion in the School District will ensure pre-requisites to learning such as safety, comfort, and well-being remain at the foundation of practice.



PRIORITY 2 **Success for each learner**

Priority 2 reflects the Board of Education's commitment to learning. As reflected in the Educated Citizen, the role of the school system is to develop the ability of students to analyze critically, reason and think independently, and acquire basic learning skills and bodies of knowledge; to develop in students a lifelong appreciation of learning, a curiosity about the world around them, and a capacity for creative thought and expression.

The School District is committed to learning that extends beyond the four walls of the classroom that develops a strong sense of connection and relationship between students, staff, and the land - supported by community. Priority 2 demonstrates the School District's commitment to a core moral purpose of providing the highest quality learning opportunities for students and the highest quality professional support for educators and support staff.



PRIORITY 3 **Growing the capacity of self and others**

As a learning organization, learning and continuous growth are at the heart of everything we do. SD6 Rocky Mountain's strength, as an organization, is grounded in each members' pursuit of ongoing personal and/or professional growth: whether student, employee, or education partner. Priority 3 ensures the School District provides meaningful opportunities for growth within which professionals continue to pursue and enhance ways to support student learning. In addition, priority 3 ensures the organization supports students to realize agency to reach goals they set for themselves.



PRIORITY 4 **Stewardship for the future**

Education is forward looking. It seeks to change the state of the world in the present but also to equip students with the attitudes and skills to bring about a more positive future society. Priority 4, Stewardship for the Future, ensures the district supports a forward-looking vision to support objectives important to the well-being of future generations.