

School District No. 6 Rocky Mountain Strategic Plan 2020-2023

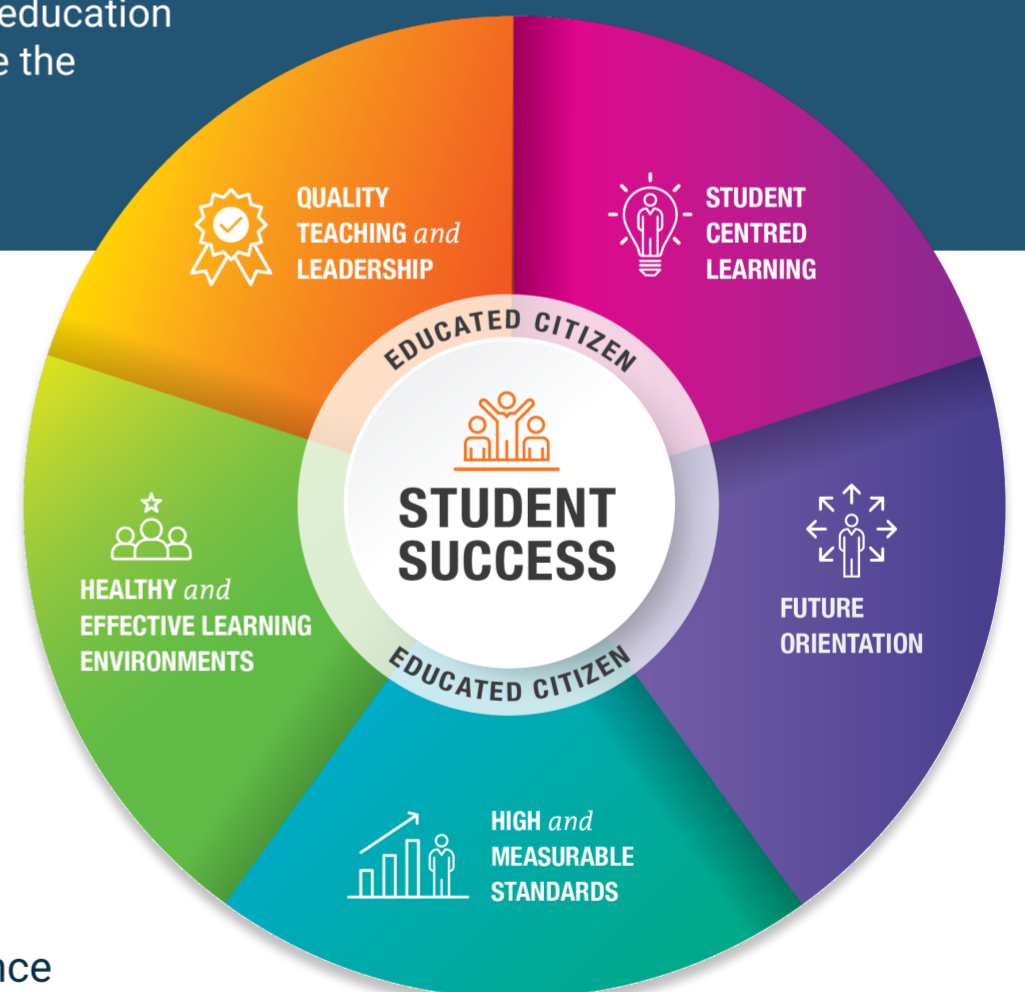


The Framework for Enhancing Student Learning was introduced into legislation in August of 2021.

The Framework brings a formalized approach to the planning and reporting expectations for schools with a focus on enhancing student learning and success. It combines accountability with evidence-informed decision making and system-wide continuous improvement to support equity of outcomes for all students in the provincial K-12 public system. The Framework also reflects a public commitment by Indigenous peoples, Indigenous rightsholders, education partners and communities to work together to improve student learning and enhance the intellectual, social and career development of all learners.

The Educated Citizen is designed as having:

- Intellectual Development – to develop the ability of students to analyze critically, reason and think independently, and acquire basic learning skills and bodies of knowledge; to develop in students a lifelong appreciation of learning, a curiosity about the world around them, and a capacity for creative thought and expression.
- Human and Social Development – to develop in students a sense of self-worth and personal initiative; to develop an appreciation of the fine arts and an understanding of cultural heritage; to develop an understanding of the importance of physical health and well-being; to develop a sense of social responsibility, acceptance and respect for the ideas and beliefs of others.
- Career Development – to prepare students to attain their career and occupational objectives; to assist in the development of effective work habits and the flexibility to deal with change in the workplace.



MISSION

We collaborate in the pursuit of each student's success to become knowledgeable, caring, contributing, resilient members of a global community.

VALUES -

RESPECT - We foster respectful relationships that build trust, safety and well-being.

EQUITY - We strive to build learning environments that are equitable, honour diversity and inclusion, are safe, caring and healthy places to work and learn.

INTEGRITY - We nurture a sense of self-awareness, responsibility and honesty as we become environmental stewards and morally upright global citizens

ACCOUNTABILITY - We are accountable to ourselves, our students and our communities for professionalism, transparency and quality results.

INNOVATION - We create learning opportunities that are high quality, place-based, creative, and that encourage students to reach their full potential.



Priority One

Equity and Inclusion

The ability to ensure each learner has what they need to succeed defines the work in the area of equity and inclusion. The District measures student responses to specific questions to determine the extent to which students feel safe, included, and connected at school. Regular attendance can be a good reflection of whether students feel a connection to school. Feeling safe, welcome, and having a sense of belonging are important pre-requisites to learning. These are also areas on which we can exert strategic influence in order to create learning spaces that are conducive to learning.

Priority Two

Success for Each Learner

This priority targets student achievement in Literacy and Numeracy which both span the curriculum. Literacy refers to students' ability to understand various forms of information, process that information, and create meaningful personal responses in a variety of different forms. Being literate involves solving problems, interpreting real life situations, and making meaning from the world around us. To be numerate, or mathematically literate, means to not only have a solid understanding of mathematics concepts but also the disposition to utilise them in order to make sense of the world around us. A numerate individual has the capacity to use mathematics to make sense of important social, scientific issues, both current and historical, local and global, and therefore enact change within their own community and broader contexts.

Priority Three

Excellence in Teaching and Leadership

High quality teaching and learning environments are at the heart of student success. To support high quality environments, the District prioritizes the development and growth of its staff through quality, leadership development and creating opportunities for collaboration. In addition, the District provides and facilitates staff access to effective supports, services and resources, such as coaching, mentoring, communities of practice, and professional learning communities.

