



**ROCKY
MOUNTAIN**

School District #6



ROCKY MOUNTAIN DISTRIBUTED LEARNING

SCHOOL SUCCESS PLAN

DRAFT – June 16, 2021



PRINCIPAL MESSAGE



Personalization – Engagement – Connection

Our goal at Rocky Mountain Distributed Learning is to provide students and families in SD6 with a personalized approach to learning while continuing to be engaged, supported and connected. RMDL offers online courses to support students in grades 10 – 12, a Learn at Home program (K – 9) and Continuing Education studies to support adult learners. We acknowledge that this place where we live, work and play is *the traditional, unceded, territories of the Ktunaxa and Secwépemc peoples and the chosen home of the Métis.*

Over the past year, our dedicated staff have worked with over 100 families in our K-9 Learn at Home Program and connected with over 250 students in Grades 9-12, along with Adult Learners. Our staff have been responsive to the needs of families and students by providing flexible curricular options, an online learn at home program and secondary course options.

We worked collaboratively and are proud of the relationships that we continue to build with Bricks and Mortar schools; these relationships have helped to create a better understanding of the programs and supports that RMDL provides to meet the needs of the learners and families in Rocky Mountain SD6.





SCHOOL DEMOGRAPHICS

Rocky Mountain Distributed Learning

NUMBER OF STAFF

2 TEACHERS
SECRETARY
PRINCIPAL

NUMBER OF STUDENTS

K-9: 20 STUDENTS
9-12 ~250 STUDENTS
CONTINUING ED

GRADE CONFIGURATIONS

K-8 LEARN AT HOME
9-12 DISTRIBUTED
LEARNING
ADULT CONTINUING ED





MISSION

We collaborate in the pursuit of each student's success as caring, resilient members of a global community.





VISION

Opportunity, equity,
and success for ALL learners



VALUES



Respect

We foster respectful relationships that build trust, safety and well-being.



Equity

We strive to build learning environments that are equitable, honour diversity and inclusion, are safe, caring and healthy places to work and learn.



Integrity

We nurture a sense of self-awareness, responsibility and truthfulness in ALL students so that they will become environmental stewards and morally upright global citizens.



Accountability

We are accountable for ourselves, our students and our communities for professionalism, transparency and quality results.



Innovation

We create learning opportunities that are high quality, place-based, creative, and that encourage students to reach their full potential.

STRATEGIC PRIORITY ONE

Equity and Inclusion



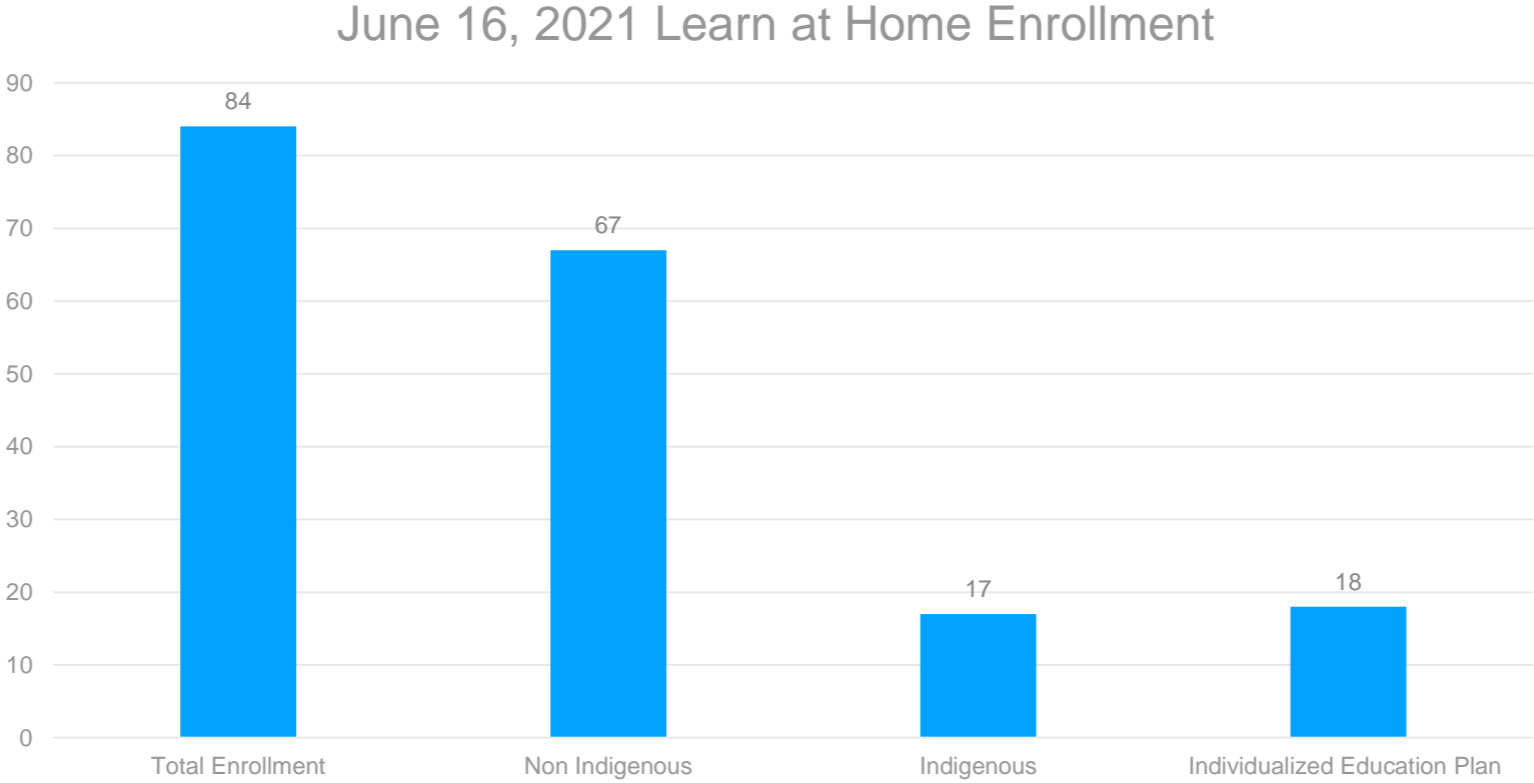
GOAL #1



To provide effective online programming and supports to meet the individual needs of all learners



RMDL LEARN AT HOME ENROLLMENT SNAPSHOT



As of June 16th, 2021 84 students are enrolled in the RMDL K- 8 Learn at Home program. 20% of our learners are Indigenous, 21% of learners receive Learning Services supports and are working on goals outlined in an Individualized Education Plan.



STRATEGIC PRIORITY ONE

Equity and Inclusion

STRATEGIC NARRATIVE:

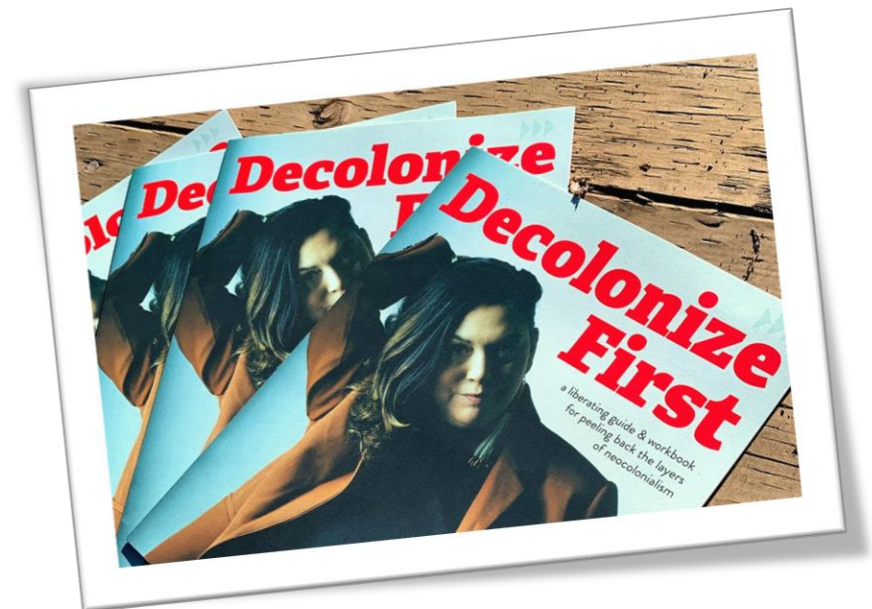
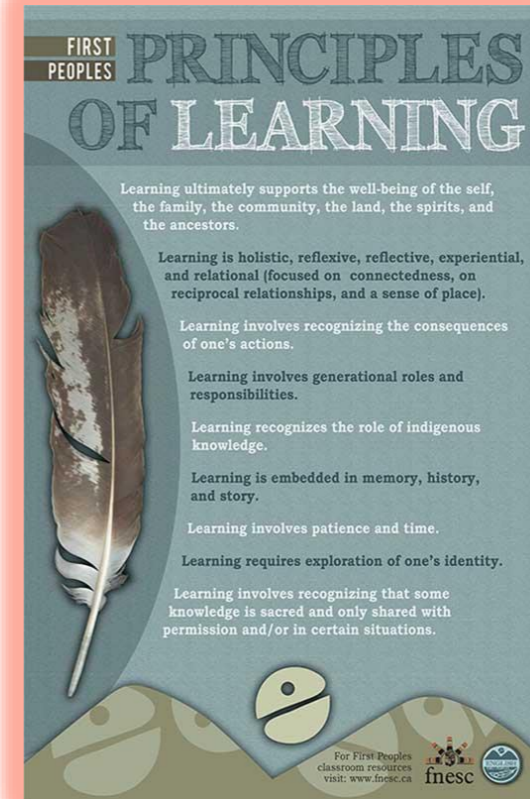
Rocky Mountain Distributed Learning provides students and families with an alternate approach to educational programming. We strive to meet the learning needs of each individual learner. RMDL staff work closely with Learning Services teams and Aboriginal Support workers in Bricks and Mortar schools to ensure that services and supports continue to be accessed. We notice that an achievement gap exists with our Indigenous students in both Literacy and Numeracy. The time invested in connecting with school teams has a significant impact on the continuity of service provided and student success. RMDL staff have noted that further focus is needed in this area.

STRATEGIC FOCUS:

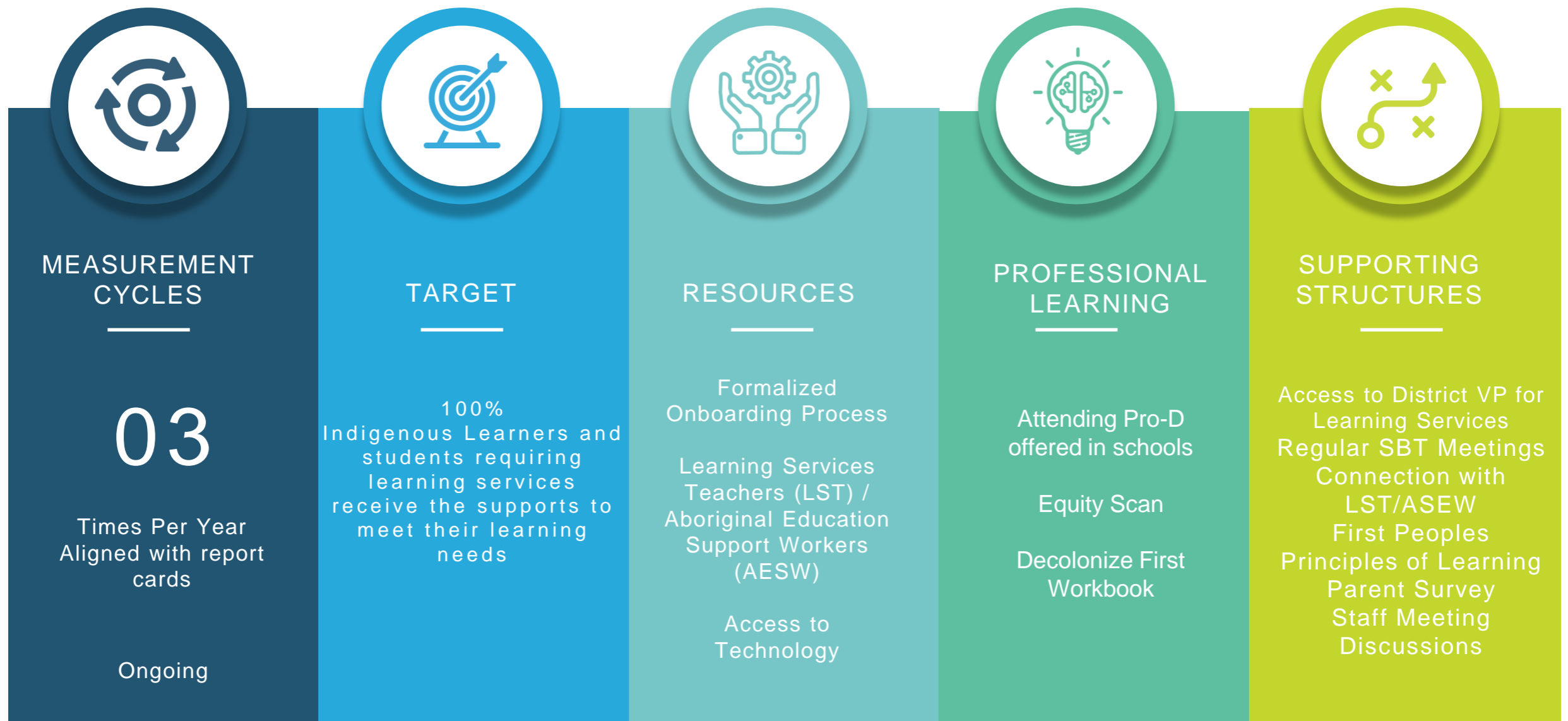
The RMDL team want to continue to strengthen the onboarding process for students who require learning services support to include the LST/Case Manager and Aboriginal Support Workers. We are looking to have a more structured process to connect with Learning Services Teams (LST) and Aboriginal Support Workers (AESW) at Bricks and Mortar schools. Creating a clear understanding of the programs and supports that RMDL provides will also assist the LST/AESW with planning for the supports and strategies needed for students success.

STRATEGIC INQUIRY:

How will structured onboarding with Learning Services Teams and Aboriginal Support Workers provide more inclusive learning opportunities and impact student achievement?



STRATEGIC TARGETS AND MEASURES



STRATEGIC PRIORITY TWO

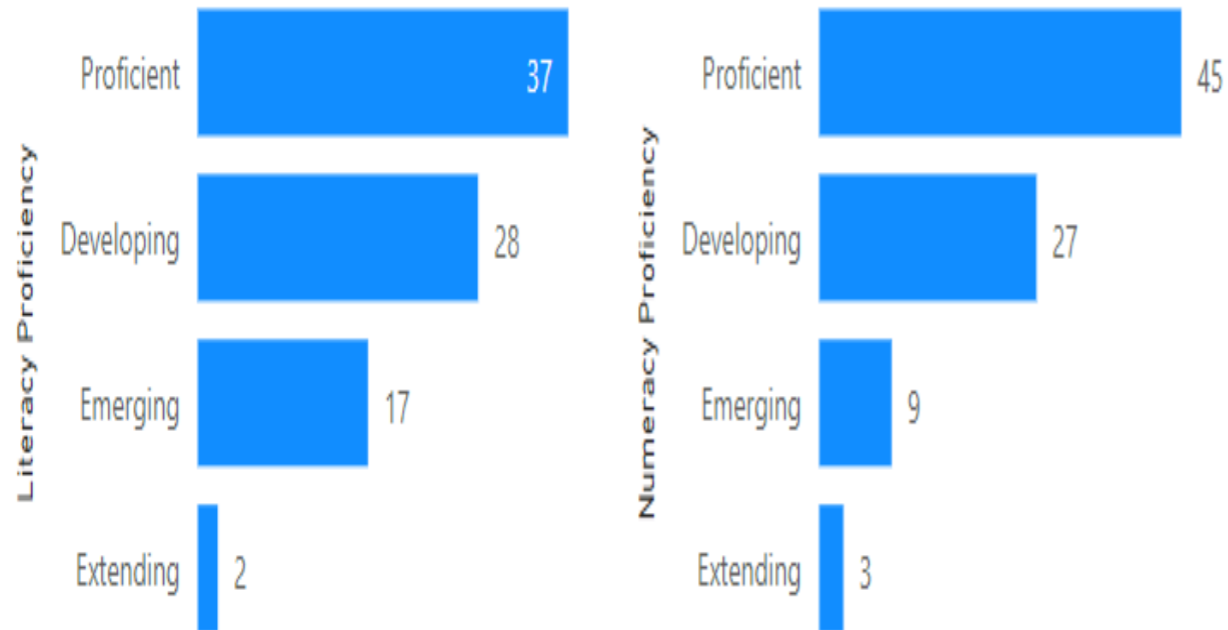
Success for all learners



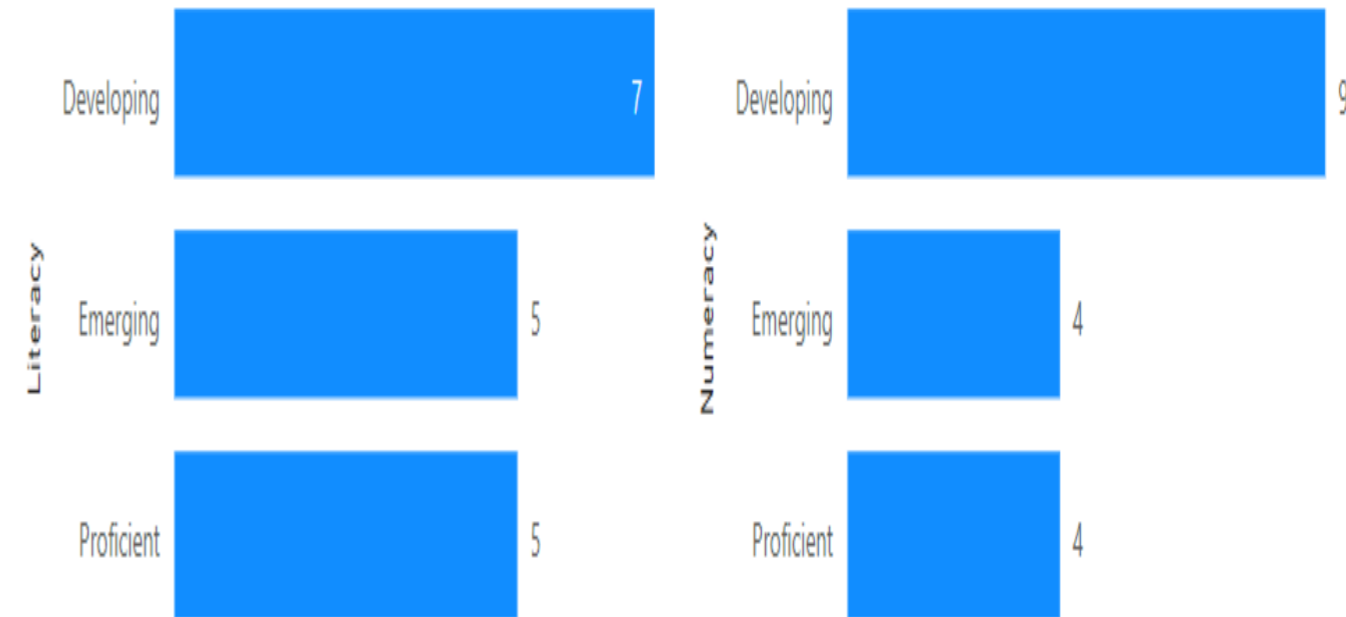
GOAL#1: Learn at Home K - 8

To improve student outcomes in Literacy and Numeracy.

Learn at Home K- 8 all Learners Literacy and Numeracy



Learn at Home K-8 Indigenous Learners Literacy and Numeracy



The literacy and numeracy data represents year end student performance outcomes. Evidence of learning was gathered from the following assessments: District Wide Write, reading assessments and ongoing teacher assessments.

Literacy results: 46% of all learners are proficient/extending and 54% are assessed as developing or emerging.

Numeracy results: 57% of all learners are proficient/extending and 43% are assessed as developing or emerging.

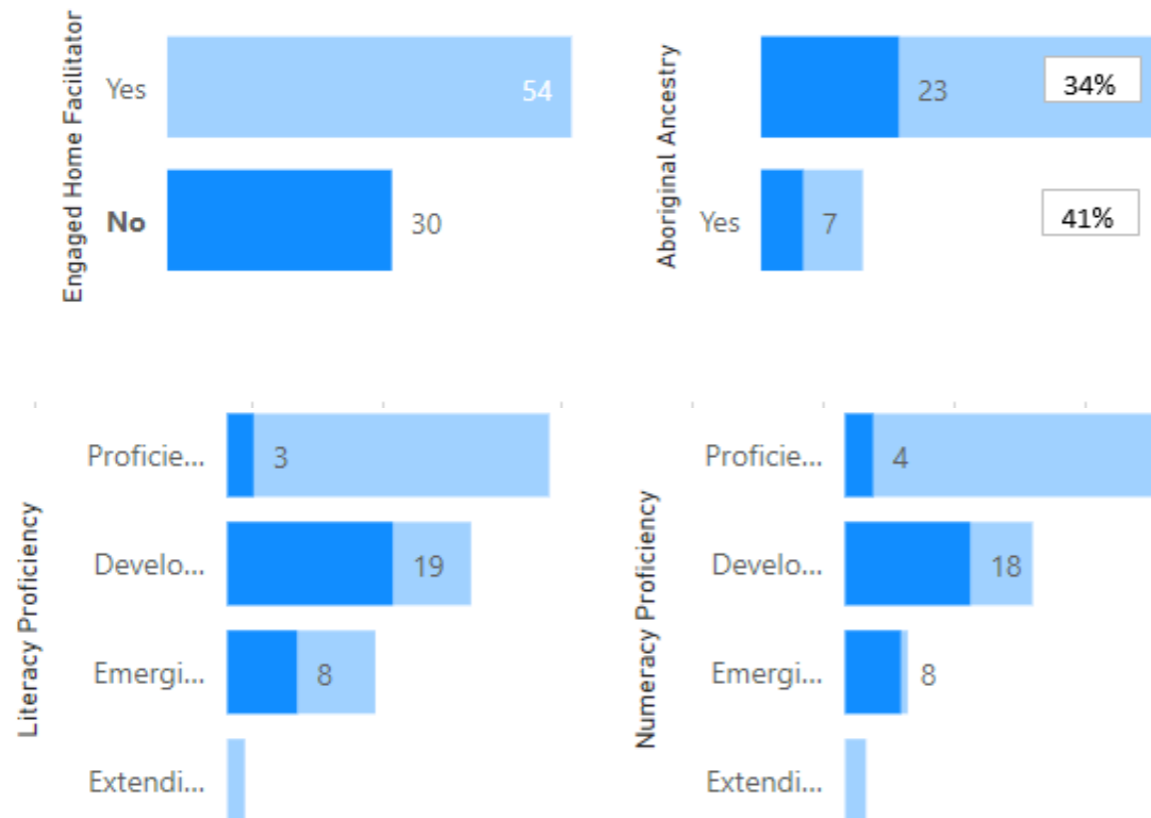
Literacy: 29% of Indigenous learners demonstrated proficiency and 71% are assessed as developing/emerging.

Numeracy: 24% of Indigenous learners demonstrated proficiency and 76% are assessed as developing/emerging.



LEARN AT HOME PROGRAM ENGAGEMENT

Learn at Home Grades K - 8



Learn at Home Parent Survey April 2021

3. Rate your child's Learn at Home experience.

[More Details](#)

40

Responses



3.65 Average Rating

4. Rate your experience as Home Facilitator.

[More Details](#)

40

Responses



3.50 Average Rating

The above information represents the level of engagement by Learn at Home Facilitators in RMDL programming. **Regular engagement is defined as: weekly access to RMDL course programming, weekly/biweekly submissions of student work, ongoing communication with teacher and student attendance at check-in meetings, scheduled assessments and workshops.** A strong correlation between parent engagement and student outcomes in Literacy and Numeracy was noted in the data collected. Two of the questions from our Learn at Home parents survey are documented above. (48% participation rate)



STRATEGIC PRIORITY TWO

Success for all learners

STRATEGIC NARRATIVE:

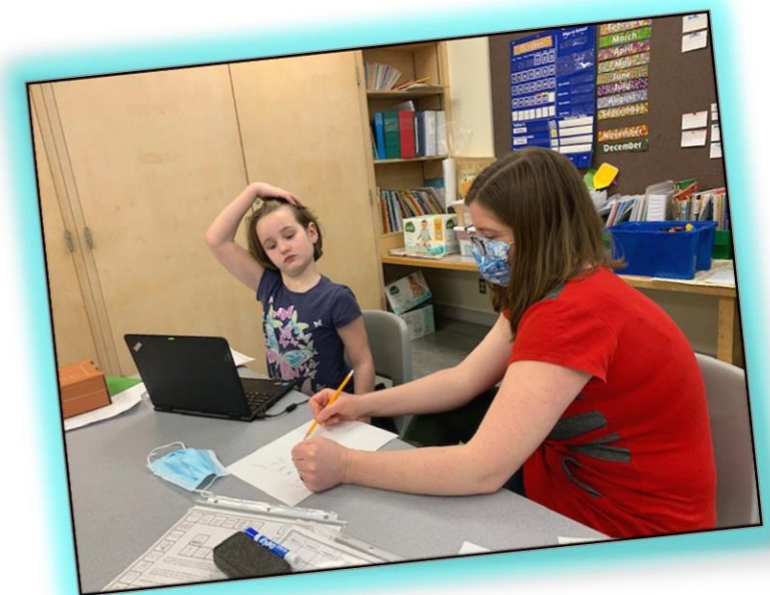
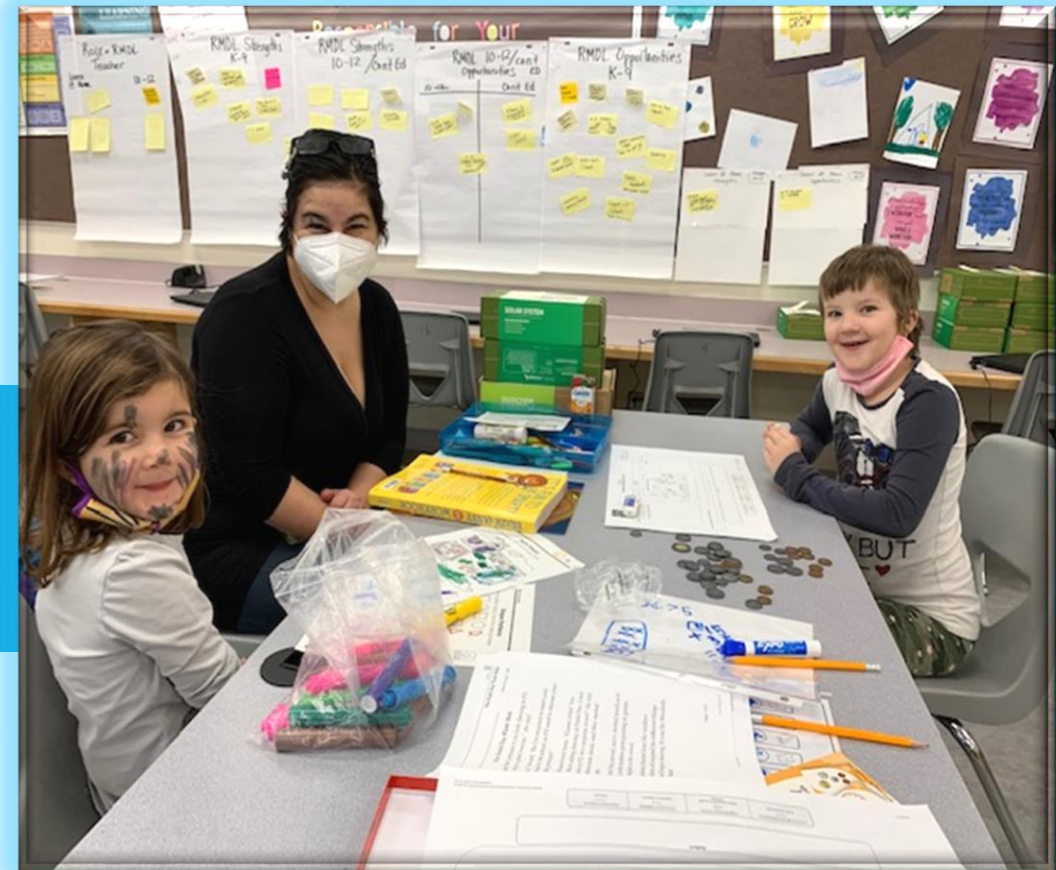
With the significant increase in RMDL enrollment in 2020-2021, many families engaged in a DL program for the first time. Embracing the role of Home Facilitator was rewarding but also presented challenges. This year, the RMDL staff will continue to build connections with families and support parents in their role of Home Facilitator. Increased parent engagement results in: regular submission of work, students attending scheduled check in meetings, learning workshops, and formal assessments. A strong correlation between parent engagement and student achievement in Literacy and Numeracy was noted in the data collected.

STRATEGIC FOCUS:

Our focus will be on creating a more structured student onboarding process, a Learn at Home Facilitators guide, and offer Home Facilitator learning workshops throughout the year. Our updated website and learning platforms (TEAMS and Moodle) will provide access to videos and additional resources to support student learning.

STRATEGIC INQUIRY:

How will a more structured onboarding approach support Learn at Home Facilitators and impact student outcomes in Literacy and Numeracy?



STRATEGIC TARGETS AND MEASURES



MEASUREMENT CYCLES

3

Times Per Year
reading assessments,
SNAP assessment,
report cards

Parent/Student survey
2 Times per year



TARGET

100% Learn at Home
students will show
improvements in both
Literacy and Numeracy

90 – 100% of students
and parents rank their
Learn at home
experience 4/5



RESOURCES

Updated Website
Virtual open house
Updated programming
Formalized
onboarding
Home Facilitator
guide/videos/
tutorials/workshops
K-3 – teams
4-8 – Moodle weekly due
dates
Parent TEAMS group



PROFESSIONAL LEARNING

Collaboration
with SD5 &
SD59

Numeracy
Assessment



SUPPORTING STRUCTURES

Biweekly/monthly
check in's with parents

Structured onboarding

LEARNING FOCUS

Staff meetings for
monitoring objectives &
adjusting strategy



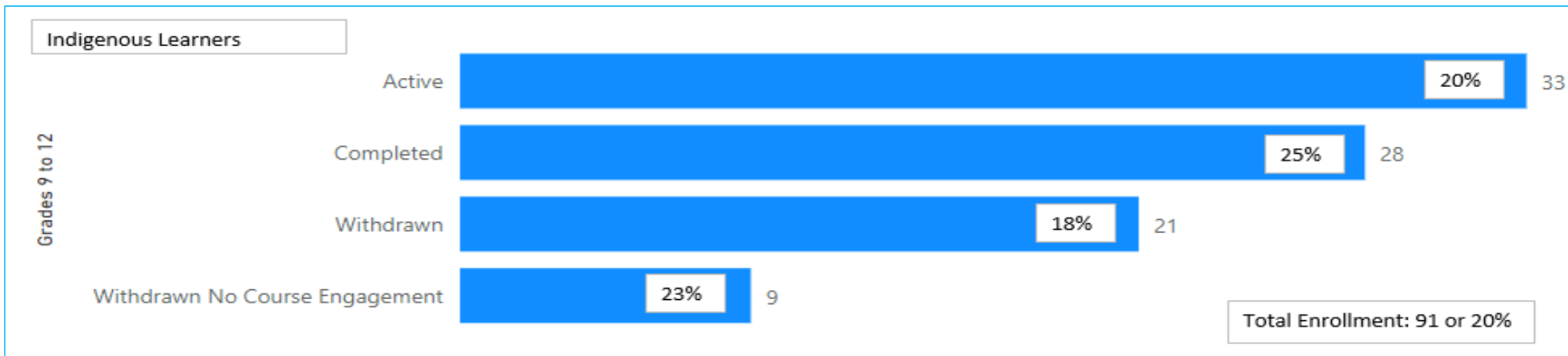
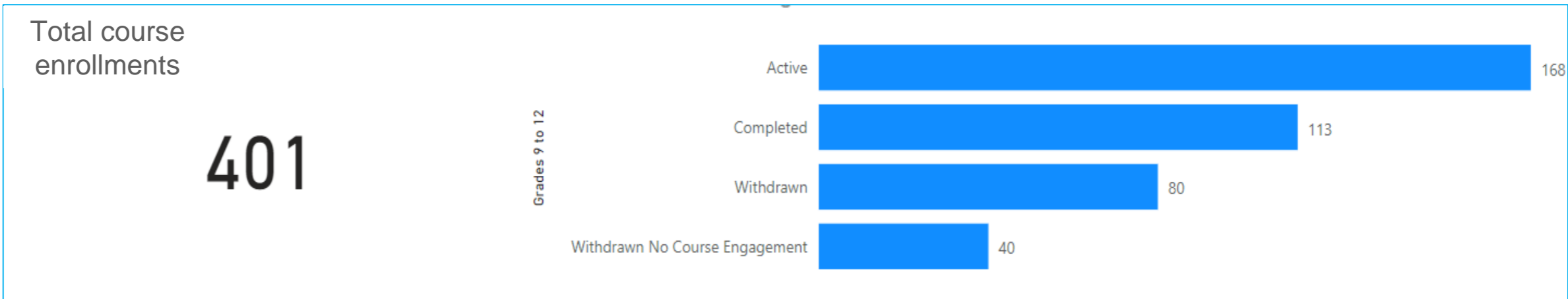
STRATEGIC PRIORITY TWO

Success for all learners



Goal #2: Distributed Learning
To increase grade 9 -12 course completions

DISTRIBUTED LEARNING GRADES 9 - 12



3. Rate your overall learning experience with your current RMDL course.

[More Details](#) [Insights](#)

28
Responses

★ ★ ★ ☆ ☆
3.29 Average Rating

The above data sets represent the total number of course enrollments by students as of June 16, 2021. Course completion rates will change significantly by June 29th, 2021. The percentage of withdrawals is impacted by: student course load, switch to Bricks and Mortar, motivation and accountability. Students success is positively impacted by connection with RMDL staff. The information above also documents the number of Indigenous learners who are engaging in online learning with RMDL.

Twenty eight students completed the student survey in April 2021. On average students rated their learning experience with RMDL as 3.29/5.



STRATEGIC PRIORITY TWO

Success for all learners



STRATEGIC NARRATIVE:

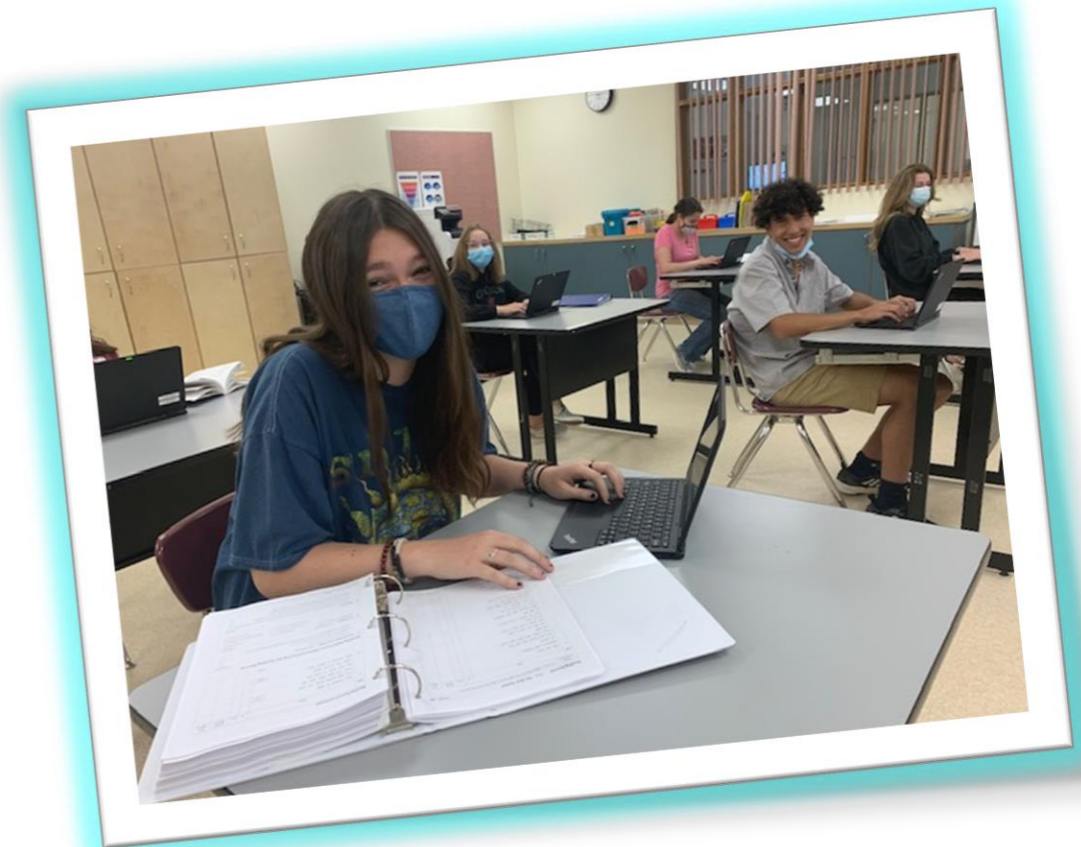
250 students in grades 9-12 enrolled in courses with RMDL in the 2020-2021. 30% of these students attended Golden Secondary, 32% David Thompson Secondary, 31% attended Selkirk Secondary School, and 7% attended RMDL full time or were out of district enrollments. Our teachers recognize the correlation between number of contact points with students and parents and course completion rates. As of June 16, 2021 our completion rate was 70%. The connection between RMDL and Secondary school staff continued to increase over the past year.

STRATEGIC FOCUS:

Our focus is to increase completion rates of all 9-12 courses. RMDL staff have identified a number of strategies to increase completion rates.

STRATEGIC INQUIRY:

How will a more structured student and parent onboarding process impact completion rates?



STRATEGIC TARGETS AND MEASURES



MEASUREMENT CYCLES

Progress reports every 6 weeks to parents
Progress reports every 2 weeks to students
4 times per year – report card/course review



TARGET

80% course completion rate
Average course rating 4/5 student survey



RESOURCES

Progress Reports Moodle and the RMDL Student management System



PROFESSIONAL LEARNING

Collaboration with SD5 & SD59
Utilize MyEd Parent Portal



SUPPORTING STRUCTURES

RMDL Student Management System
LEARNING FOCUS
Staff meeting for monitoring objectives & adjusting strategy



STRATEGIC PRIORITY THREE

Excellence in Teaching
and Leadership



GOAL

To implement a formalized Numeracy assessment process.



STRATEGIC PRIORITY THREE

Excellence in Teaching and Leadership

STRATEGIC NARRATIVE:

The RMDL staff have engaged in a considerable amount professional learning focused on Literacy assessment. We are now wanting to take the same focused approach to improve our Numeracy assessment practice in the primary and intermediate grades.

STRATEGIC FOCUS:

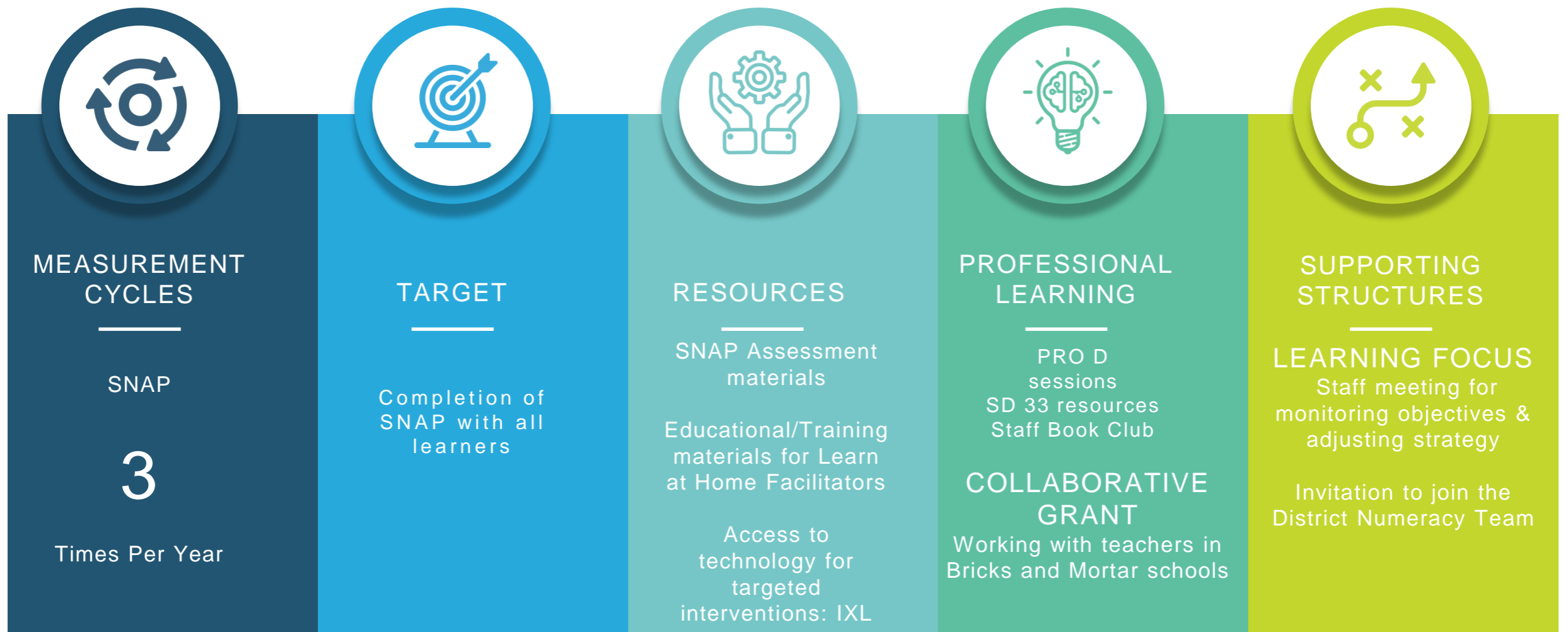
We will use the SNAP Numeracy to align our assessment practice. Teachers will be attend professional development sessions and collaborate with teacher groups within each zone. Information/tools from the SD33 SNAP website will be accessed.

STRATEGIC INQUIRY:

How will implementing a standard Numeracy assessment impact student achievement?



STRATEGIC TARGETS AND MEASURES





STRATEGIC INQUIRY OR IMPLEMENTATION

In this plan, the Rocky Mountain Distributed Learning team focused on areas specific to a Learn at Home/on line learning environment within each strategic area identified by the Board of Education. It should be noted the RMDL enrollment continues to fluctuate as families decide on the best educational choices for their children in these unprecedented times.

