

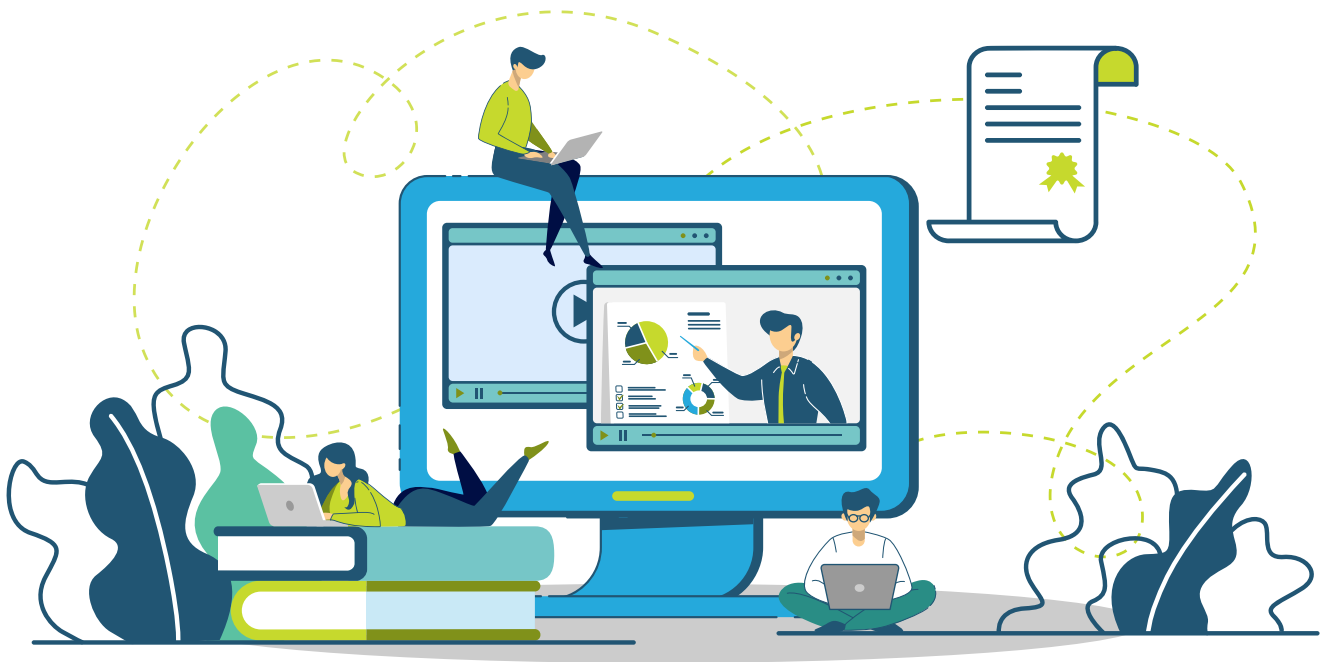
2021-2023

# TECHNOLOGY PLAN

School District 6 Rocky Mountain is located on the traditional unceded shared territory of the Ktunaxa and Secwépemc peoples and the chosen home of the Métis.



**Rocky Mountain**  
School District #6



---

# SHARED VISION

A Technology Plan supportive of our District Strategic Plan

---

The Rocky Mountain Learning Technology Team believes in growing a Digital Learning Culture to empower learners and deepen learning.

---

# STRATEGIC PRIORITIES

---



**Network  
Infrastructure**



**Professional  
Learning**

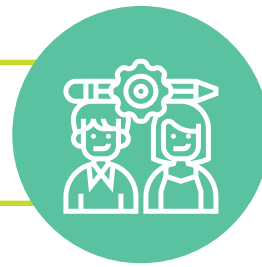


**Student  
Learning**

---

# STUDENT LEARNING

---



## **GOAL: Provide high quality Digital resources and instruction to support student learning**

- Enhance student use of quality digital resources (including assistive technologies) (SP1,SP2)
- Expand student opportunities for integrating technology across the curriculum (SP2)
- Foster creative innovation (SP2)
- Engage students in learning opportunities that empower them to become healthy Digital Citizens (SP1, SP2)
- Support parents as partners in student learning (SP1, SP2)

---

# PROFESSIONAL LEARNING

---



## **GOAL: Provide staff with Professional Learning opportunities to support greater collective capacity**

- Establish Technology Educator Collaborative Networks (SP3)
- Maintain an Educational Technology Support role (SP3)
- Build staff capacity with the effective and innovative uses of technologies (SP3)

---

# NETWORK INFRASTRUCTURE

---



## **GOAL: Sustain a robust and secure infrastructure to support district technology needs**

- Establish an equitable infrastructure refresh cycle (SP1, SP2, SP3)
- Integrate district systems (SP2)
- Improve the student device access ratio (SP1, SP2)
- Implement industry standard policies and practices to ensure the safety and integrity of our network (SP1, SP2, SP3)

---

# DISTRICT TECHNOLOGY PLAN NARRATIVE

---

The District Technology Plan was developed collaboratively by the District Technology Advisory Committee. The Committee includes representation from the Board of Trustees, RMTA, CUPE 440, RMPVPA, DPAC, and District Administration Staff.

The Committee met several times during the 2020-2021 school year to review information from all education partners across the district. They also reviewed information from an IBM IT Optimization Report received in December, 2020. After synthesizing the information, the Committee discussed technology prioritizes for the District and worked through multiple iterations of a plan.

**The final version of the plan is intended to support the District Strategic Plan.**

The references to SP1, SP2, and SP3 throughout the plan refer to alignment with the three priorities identified in the District Strategic Plan. SP1 - Equity and Inclusion, SP2 - Success for Each Learner, and SP3 - Excellence in Teaching and Leadership.

