



**KICKING HORSE
CANYON** PHASE 4

Project Summary

March 8, 2021

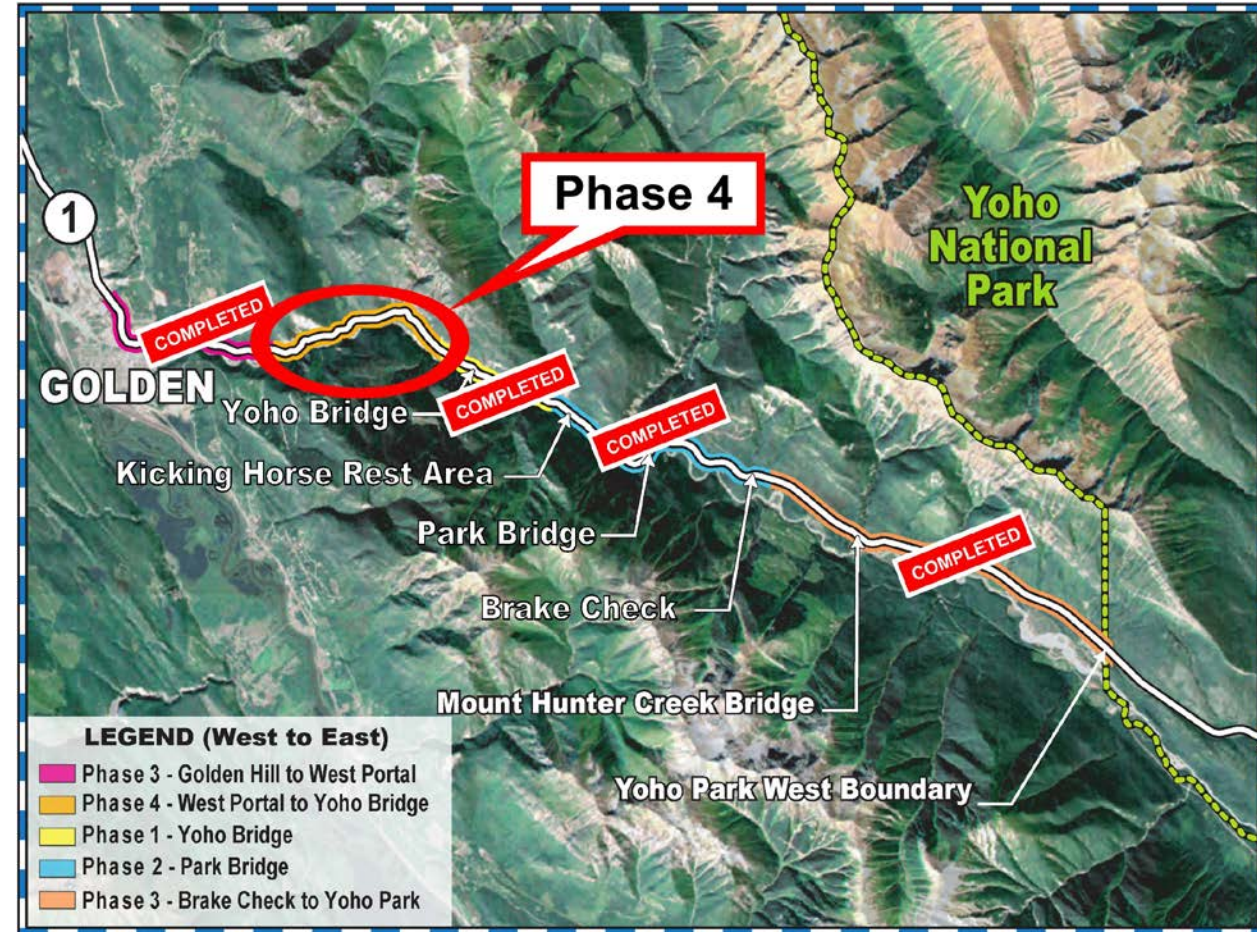


transportation
investment
corporation



Outline

- Project overview
- Current status / schedule
- Construction traffic management
- Looking ahead



Project overview

Objectives

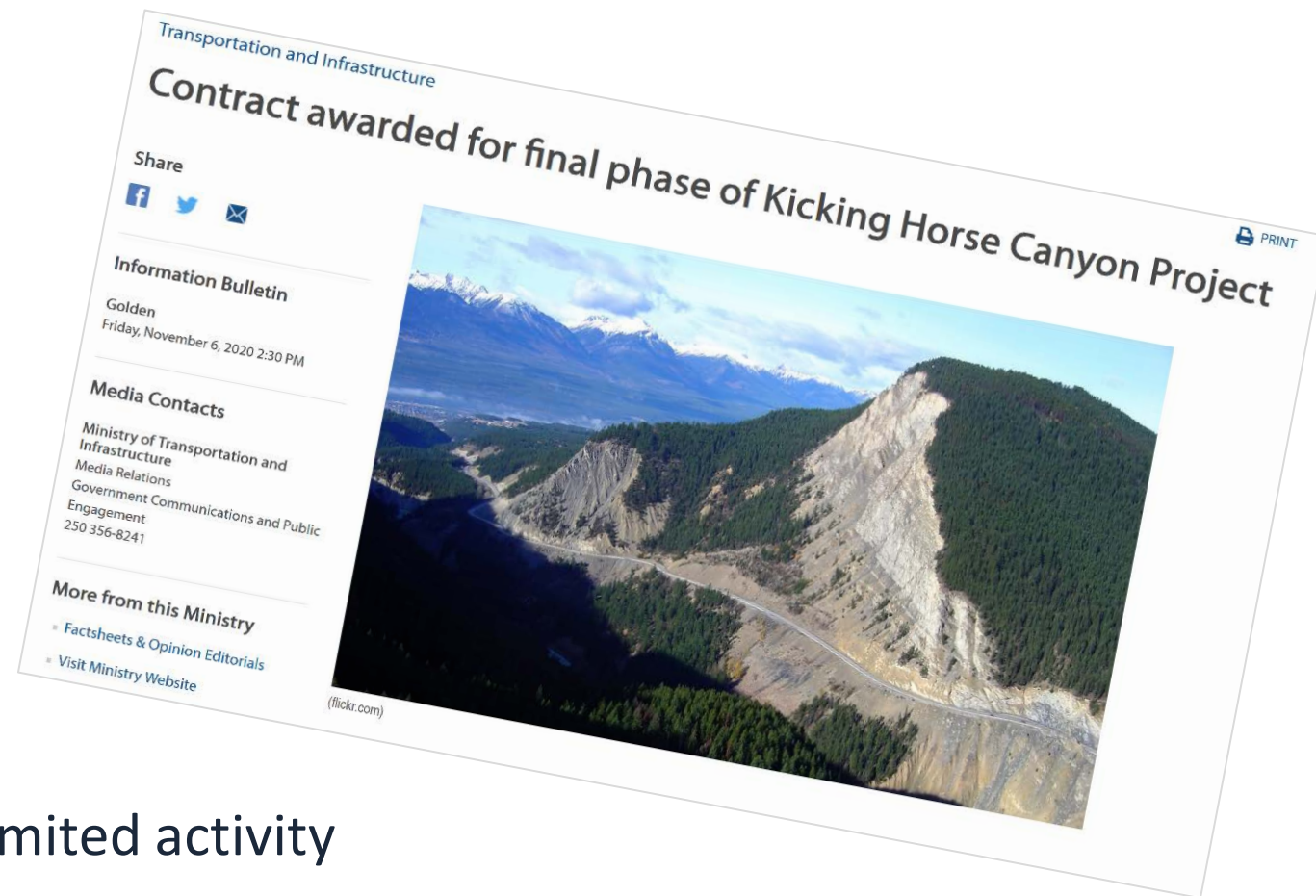
- Upgrade the last and most challenging section of TCH (4.8 km) in the Kicking Horse Canyon to:
 - Improve traveler safety
 - Improve highway reliability
 - Mitigate rockfall and avalanche hazards
 - Reduce vehicle-wildlife collisions through fencing and passage structures



Project overview

Status / schedule

- Design-Build contract formally awarded November 6, 2020
- Kicking Horse Canyon Constructors:
 - Aecon Group Inc.
 - Parsons Inc.
 - Emil Anderson Construction
- Construction began fall 2020 with limited activity
- Preparing for major works when ground conditions allow – likely in March
- Target substantial completion winter 2023/24



Construction traffic management

Construction considerations

- Major excavations from steep, high & unstable slopes
- Protecting safety of crews & travelling public
- Constrained, heavily-travelled corridor
- Highway closures during construction will be required
- Local detour options not available



Construction traffic management

Key traffic management principles

- Safety
- Reliability (schedule information & execution)
- Consistency
- Communications (advance notice & Drive BC)



Construction traffic management

Approach

- Manage access during construction for local commuters, school bus & emergency services
- Work as much as possible during the night
- Restrict daytime closures to off-peak periods
- No traffic disruptions during long weekends
- Extended closures only during shoulder season (beginning spring 2021)



Permitted times for 20-30 minute stoppages

J F M A M J J A S O N D

TRAFFIC MANAGEMENT – GENERAL PARAMETERS

**20-30
minute
stoppages**
(constant
single-lane
alternating
or 2-way
once per
hour)

Anytime except
peak*

Nights only
8:00 pm – 7:00 am

Anytime except
peak*

*Peak hours: 7:00 am to 9:00 am and 3:00 pm to 5:00 pm.

Permitted times for closures under two hours

J F M A M J J A S O N D

TRAFFIC MANAGEMENT – GENERAL PARAMETERS

Closures
< 2 hours

Anytime except
peak⁺

Nights only
10:00 pm –
7:00 am*

Anytime except
peak⁺

*Hours are more restrictive on weekends: midnight start on Friday night; not permitted Saturday night, but allowed from 5:00 am to 7:00 am Saturday and Sunday mornings.

⁺During ski season, 2-hour closures not permitted between 3 pm and 9 pm Friday or between 7 am and 9 pm weekends.

Permitted times for night closures

	J	F	M	A	M	J	J	A	S	O	N	D
TRAFFIC MANAGEMENT – GENERAL PARAMETERS												
Night closures 2-9 hours												
	10:00 pm – 7:00 am					10:00 pm – 7:00 am*			10:00 pm – 7:00 am			

*Not permitted Friday night / Saturday morning

Permitted times for extended closures

J	F	M	A	M	J	J	A	S	O	N	D
---	---	---	---	---	---	---	---	---	---	---	---

TRAFFIC MANAGEMENT – GENERAL PARAMETERS

**Extended
closures**
(multi-day/
24-hours)

Except
Easter &
Victoria
Day

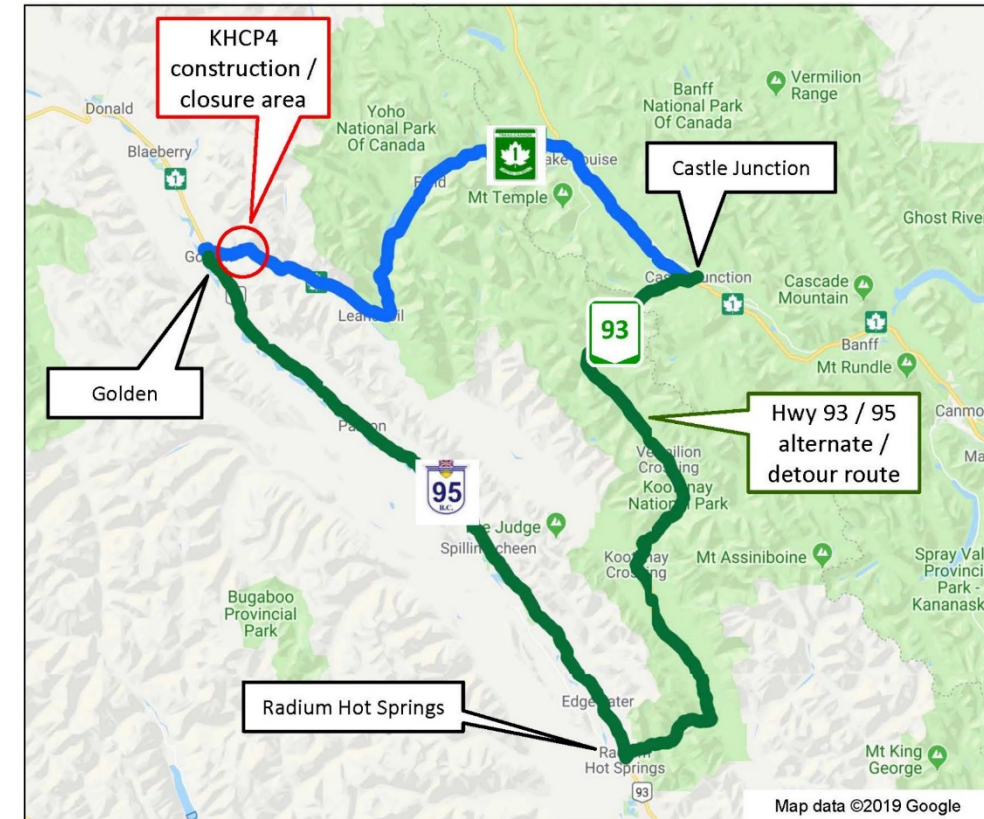
Except
Thanksgiving

Over the course of the project, there will be a maximum total of 30 weeks of extended-day closures, confined to the lowest-traffic shoulder seasons. During the last two weeks of May and last two weeks of September (entering and exiting the summer season) the extended closures will be allowed only on weekdays. There will be two daily windows for school buses and local commuter traffic.

Construction traffic management

Alternate route during closures

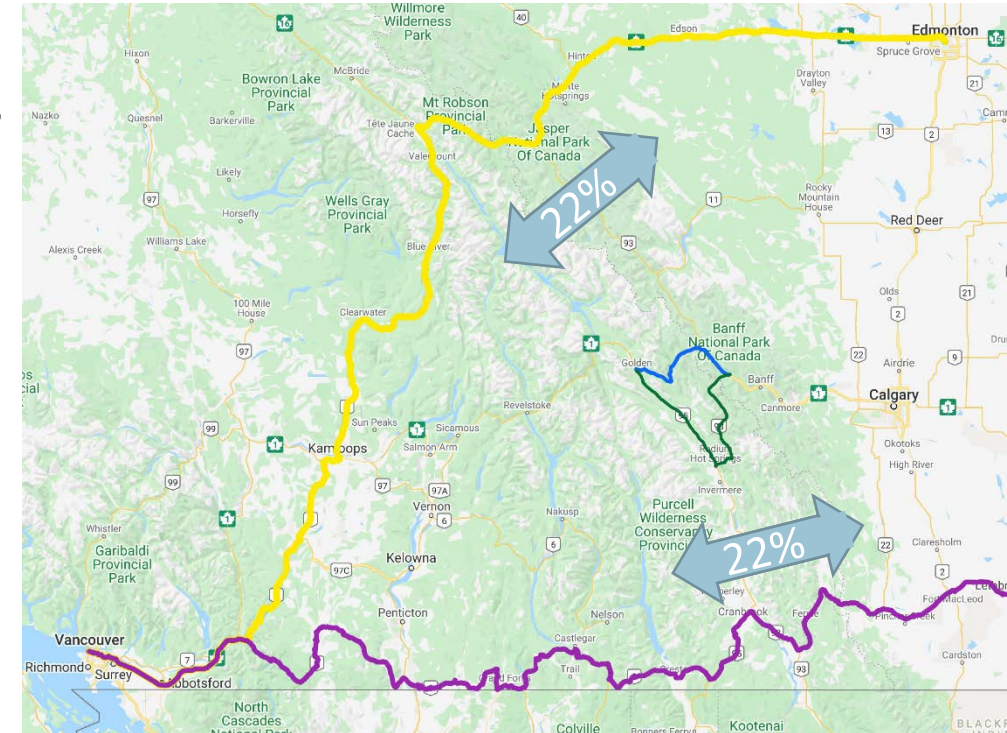
- Closures to occur off-peak periods only, when baseline levels are low
- Hwy 93/95 – designated alternate route
- Adds up to 1.5 hours to trip



Construction traffic management

Truck traffic diversion during TCH closures

- Factors for carriers may include origin, destination, shipping schedule & length of stoppage
- Waiting is an option (for shorter stoppages)
- Hwy 93/95 – designated alternate route
- Hwy 3 & Hwy 16/5 not part of KHCP strategy, but likely options for some long-haul carriers (up to 22% of truck traffic might divert to each)
- Working with BCTA



Construction traffic management

Close-up: Hwy 93/95 & considerations

Capacity

- Detailed assessment in 2019 confirmed adequate Hwy 93/95 capacity during detour periods for expected traffic volume
- Some operational improvements suggested, including temporary signals, added signage, extended turning bays, etc.



Construction traffic management

Close-up: Hwy 93/95 & considerations

Safety

- Detailed assessment in 2019 confirmed Hwy 93/95 generally safe
- Some enhancements suggested, including additional delineators for visibility, signage, crosswalk improvements and school bus stop enhancements



Construction traffic management

Close-up: Hwy 93/95 & considerations

Seasonal characteristics

- Winter driving conditions similar to TCH, but some areas require extra caution (e.g. Sinclair Canyon)
- Wildlife migration: awareness signage
- School year – buses & children: awareness signage, enforcement & education program



Construction traffic management

Close-up: Hwy 93/95 & considerations

Route & roadway characteristics & amenities

- Maintenance to be raised to TCH level
- Shoulders, markings & signage
- Radium roundabout
- Golden improvements
- Golden bridges
- Increased enforcement



Planned stoppages & closures*

As of March 8, 2021

- Extended closures (24-hours/multi-day):
 - From April 12 – May 14
 - Weekdays only May 17 – May 31
(not on weekends or Victoria Day holiday)
- Other stoppages & closures this spring (dates/times TBC):
 - Single lane alternating traffic (20-30 min delays)
 - Full closures up to 2 hours in daytime off-peak
(late morning, early afternoon, early evening)
 - Full closures of up to 9 hours overnight;
traffic diverted to Hwys 93 & 95



Kicking Horse Canyon Project – TCH Traffic Routing During Extended Closures (subject to change)

	Through Canyon						Alternate Route	
Trip/Vehicle Type	First Responders	School bus	Commuters & Field residents with priority pass	Other local / essential passenger traffic (with day pass)	Passenger coaches	Local deliveries including mail & consumable goods to Golden / Field / Lake Louise	Long-haul freight	Overflow passenger traffic (not able to be accommodated in peak hour window)
When	Anytime on 15 minutes notice	6:45 am EB 8:15 am WB 3:15 pm EB 5:00 pm WB	7:00 am EB 7:15 am WB 4:30 pm EB 4:45 pm WB	7:00 am EB 7:15 am WB 4:30 pm EB 4:45 pm WB	7:00 am EB 7:15 am WB 4:30 pm EB 4:45 pm WB	7:00 am EB 7:15 am WB 4:30 pm EB 4:45 pm WB	At all times during the closure	At all times during the closure
Rules/ Conditions	Must be in response mode Dedicated cell number to be provided by KHCC for First Responders	Scheduled passage to pick up or drop off students	Commuter pass issued to those who must travel between Golden and Field for work	Acquire printable pass by email from KHCP Admin on travel day or one business day prior	Standing exemption	Standing exemption; need to prepare list		
Note: to permit safe transit within the allotted time, passage limited to approximately 150 vehicles in total in each direction. This may vary depending on construction zone conditions.								

Construction Traffic Management

Communicating project info & traffic impacts

- Project website www.kickinghorsecanyon.ca
- Growing list of subscribers to project updates
- Information bulletins to traditional media
- Notifications to stakeholders & contact network
- Social media – dedicated channels coming
- [DriveBC](#)
- Kicking Horse Canyon Constructors
24/7 info line 1-844-815-6111

